

PART OF N.W. 1/4 OF SECTION 29, T. 7 N., R. 1 W., S. L. B. & M.

IN TOWN OF PLEASANT VIEW

SCALE 1"=100'

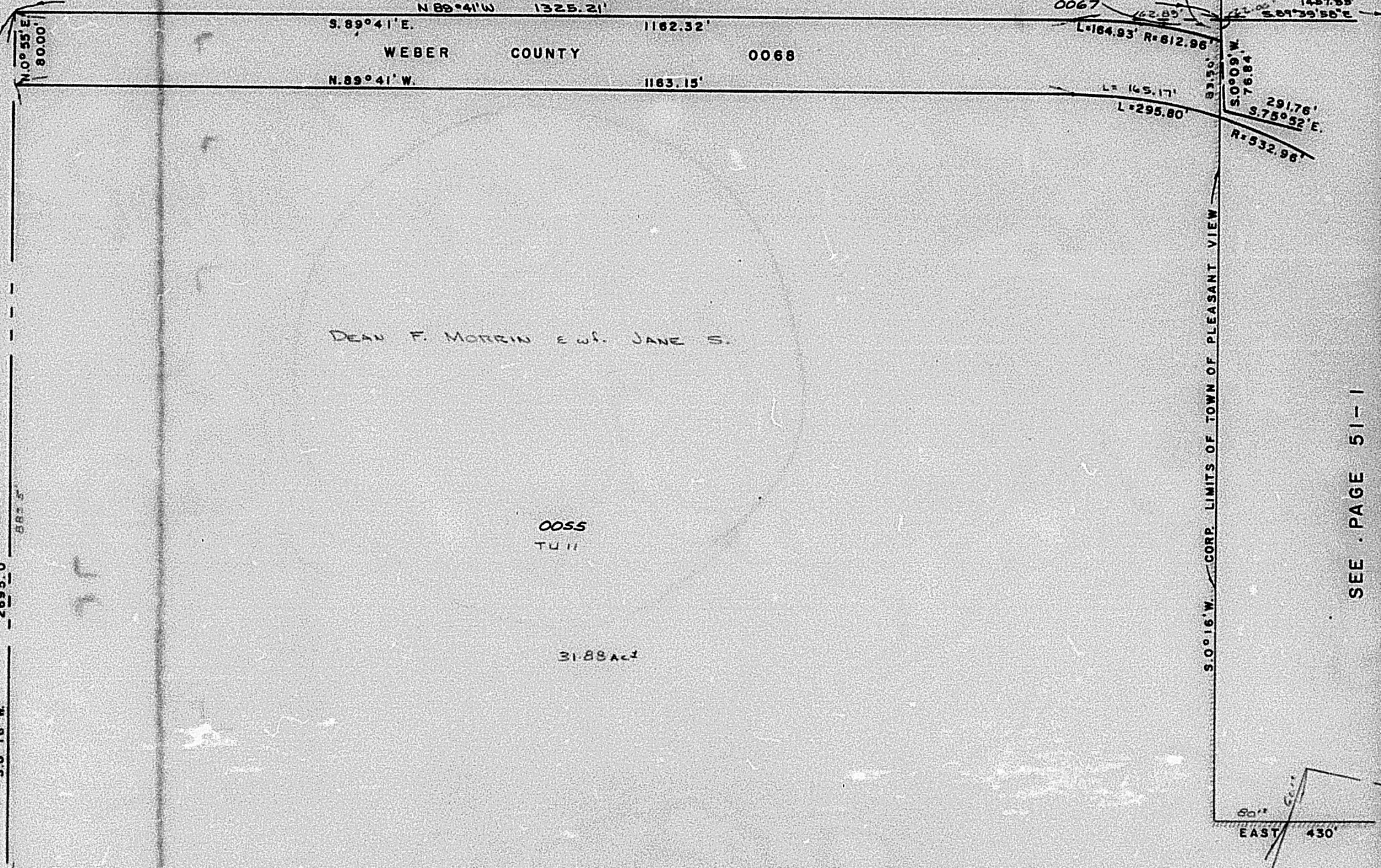
TAXING UNIT II

SEE BOOK 16, PAGE 37-3

PREFIX: 17-051
BOARD OF EDUCATION
WEBER COUNTY SCHOOL DISTRICT

WEBER COUNTY 0068

PARCEL No
0006
0007
0009 TO 0016
0065
0067



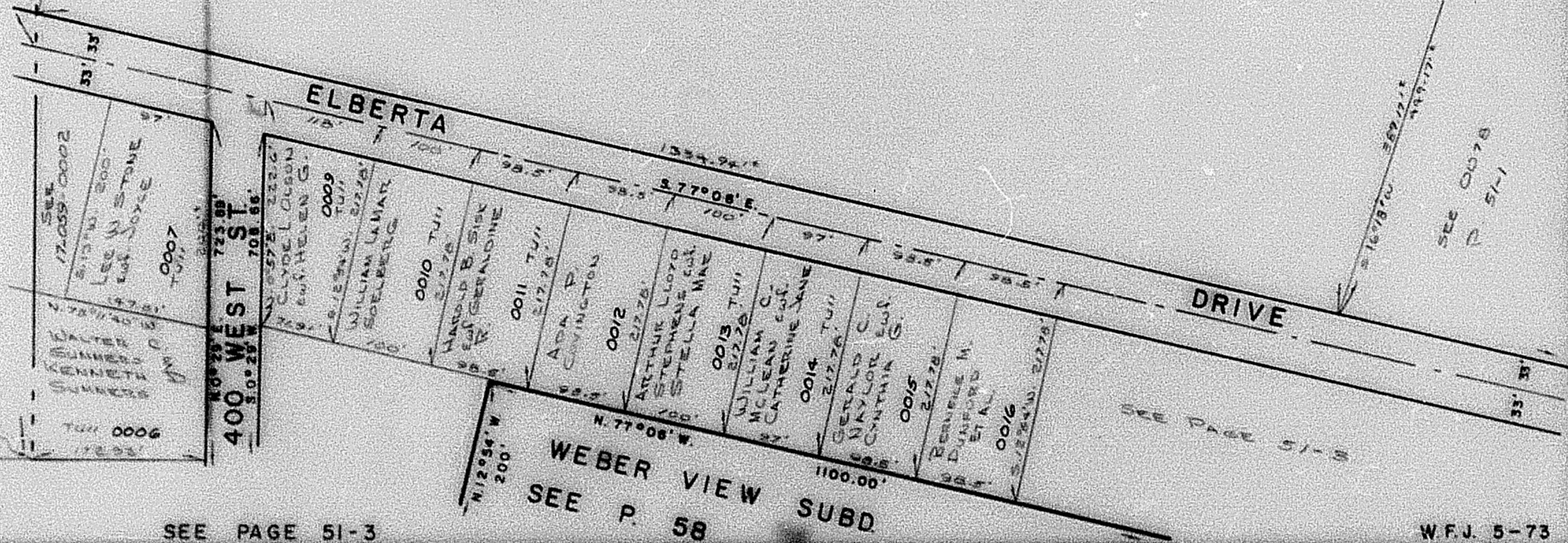
DEAN F. MORRIS & WIFE JANE S.

0055
T.U. II

31.88 ac ±

SEE PAGE 59

SEE PAGE 51-1



SEE PAGE 51-3

WEBER VIEW SUBD
SEE P. 58

SEE PAGE 51-5

W.F.J. 5-73